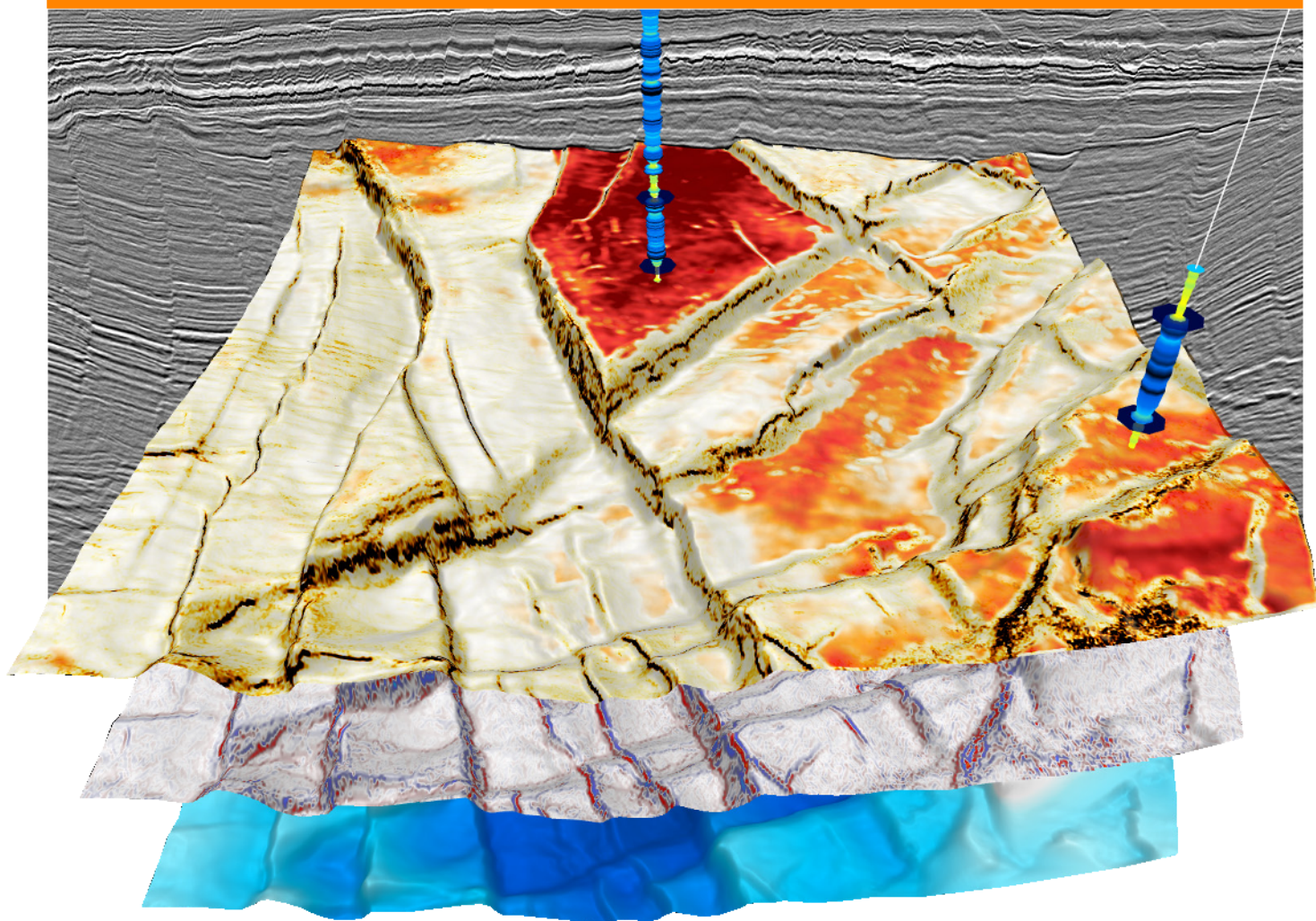


# DUG Insight

Prioritising geoscience, enabling productivity

Modern, interactive, seismic interpretation and visualisation



**DUG Insight** is a complete service-solution for interpretation, visualisation, 2D/3D/pre-stack/time-lapse amplitude analysis, and rock-property inversion, as well as advanced seismic-data time-processing, depth-imaging, and full waveform inversion (FWI) — including DUG's revolutionary Elastic Multi-parameter FWI Imaging technology.

Now enhanced with integrated AI and machine learning (AI/ML) capabilities, DUG Insight accelerates interpretation workflows, automates complex analysis, and reveals deeper insights.

Driven by continuous research and innovation, DUG Insight brings together an arsenal of powerhouse functionality — delivering better results, faster.

Let's talk — Contact [info@dug.com](mailto:info@dug.com)

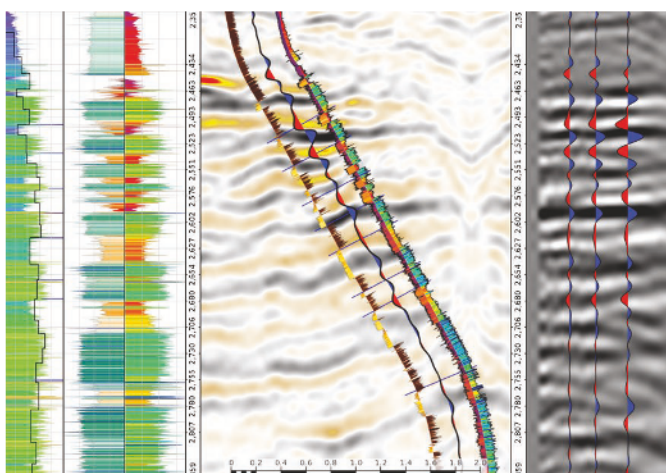
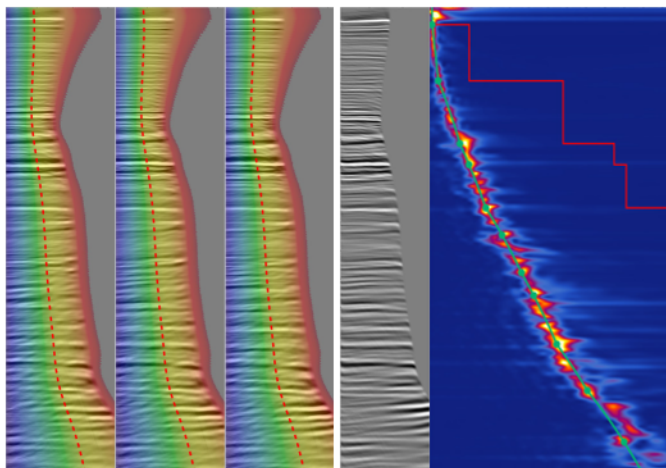
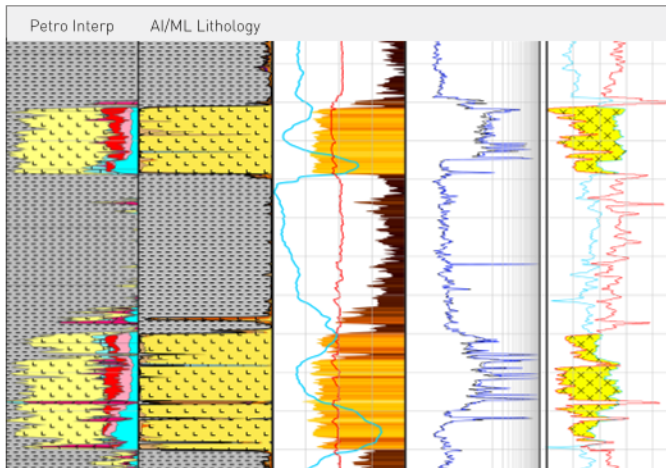
[dug.com/insight](https://dug.com/insight)



# DUG Insight

## Geoscience, not computer science

**Modern interpretation workflows** need modern software. Geoscientists must adapt to increasing data volumes and evolving technology requirements. Leaders must onboard new team members smoothly, and have a comprehensive set of tools to tackle any challenge across land, marine and ocean-bottom surveys.



### POWERFUL FUNCTIONALITY

- Comprehensive 2D/3D/pre-stack/time-lapse functionality for oil & gas, offshore wind, mining, geothermal & CCUS applications
- Inherently scalable to handle increasing data volumes — whether it's a mega-merge, a massive OBN survey or an ultra-high-density, on-shore project
- Modules for advanced signal processing, imaging & quantitative analysis
- Everything pre-stack, by design
- IHS Kingdom\* & Petrel+ data links
- From basin to prospect scale, from your desk to the data room

\*Mark of IHS, \*Mark of Schlumberger

### SUPPORTED FLEXIBILITY

- Acclaimed technical team providing tailored, round-the-clock, same-day support
- Flexible licensing & leasing inclusive of maintenance, support & upgrades
- Use on DUG HPC Cloud or deploy on-premise
- Multi-user, cross-platform compatibility

### INTERACTIVE PRODUCTIVITY

- An interactive project experience with real-time feedback
- Parametrise workflows from hundreds of interactive processes & view outputs on the fly
- Prototype & derive optimal parameters faster — deliver superior results sooner
- Consistent, easy-to-use interface



**FREE TRIAL**  
Always free for students

Let DUG Insight's state-of-the-art technology help make your next discovery

Let's talk — Contact [info@dug.com](mailto:info@dug.com)

[dug.com/insight](https://dug.com/insight)

