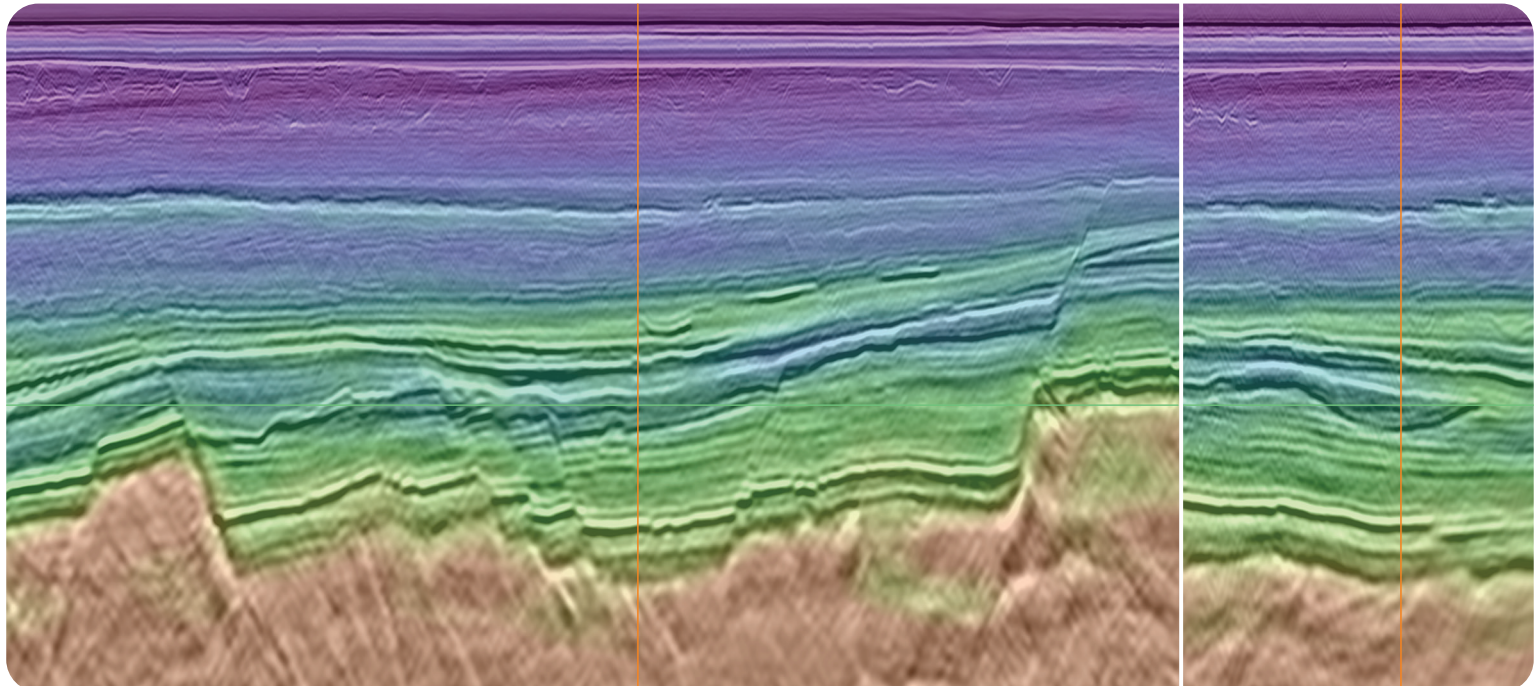
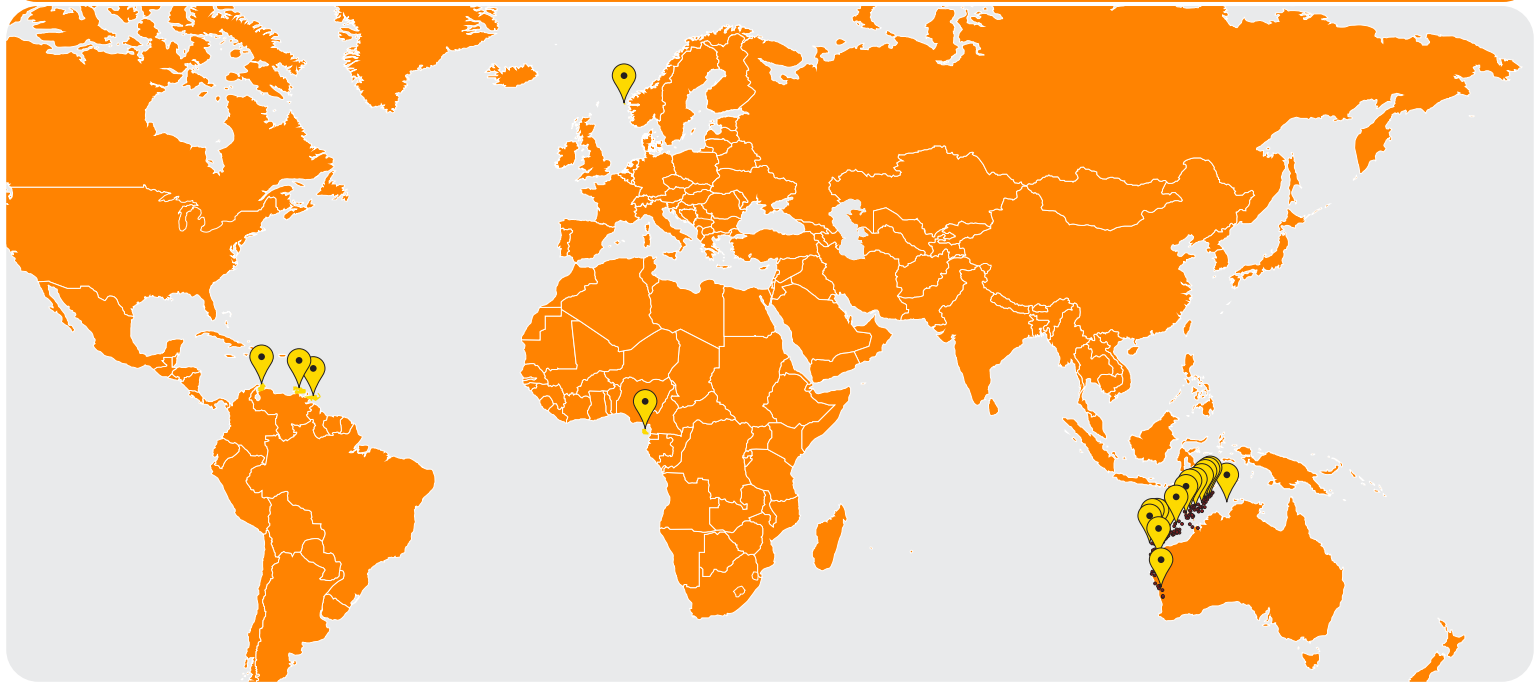


DUG MULTI-CLIENT

Explore with confidence using DUG's enhanced seismic imaging for smarter exploration, appraisal and development decisions.



Building a world-class multi-client seismic data library that the energy industry can rely on.

Equatorial Guinea

- New high resolution PSDM MC3D – 9,525 km²
- Reprocessing of 6 legacy 3D surveys using advanced FWI algorithms and pre-stack depth imaging to produce a single seamless 3D volume over the prospective, yet underexplored, Rio Muni and Douala Basins
- Project partners: MHDM, Geoex MCG, Perceptum

Greater Caribbean

- Reprocessed PSDM MC2D Surveys – 18,400 km
- DUG, in partnership with Geoex MCG, have completed three pre-stack depth reprocessed datasets available near the Orinoco Delta, Perla & Dragon fields

Norway

- Quad 35 North Hybrid MC3D – 420 km²
- High density streamer & OBN acquisition & PSDM imaging
- Includes DUG's MP-FWI Imaging - 100 km²
- Resolved imaging challenges on the Gjoa field and revealed adjacent prospectivity
- Project partners: Geoex MCG, Seismic Partner, BGP

Australia

High resolution PSDM imaging:

- Northern Carnarvon Basin MC3D – 16,468 km²
- Vulcan Sub-Basin MC3D – 17,658 km²
- QI studies
- Rock physics studies
- Regional seismic interpretation studies

For further information contact:

Stephen Doyle: stephend@dug.com

Julian Sherriff: julians@dug.com

