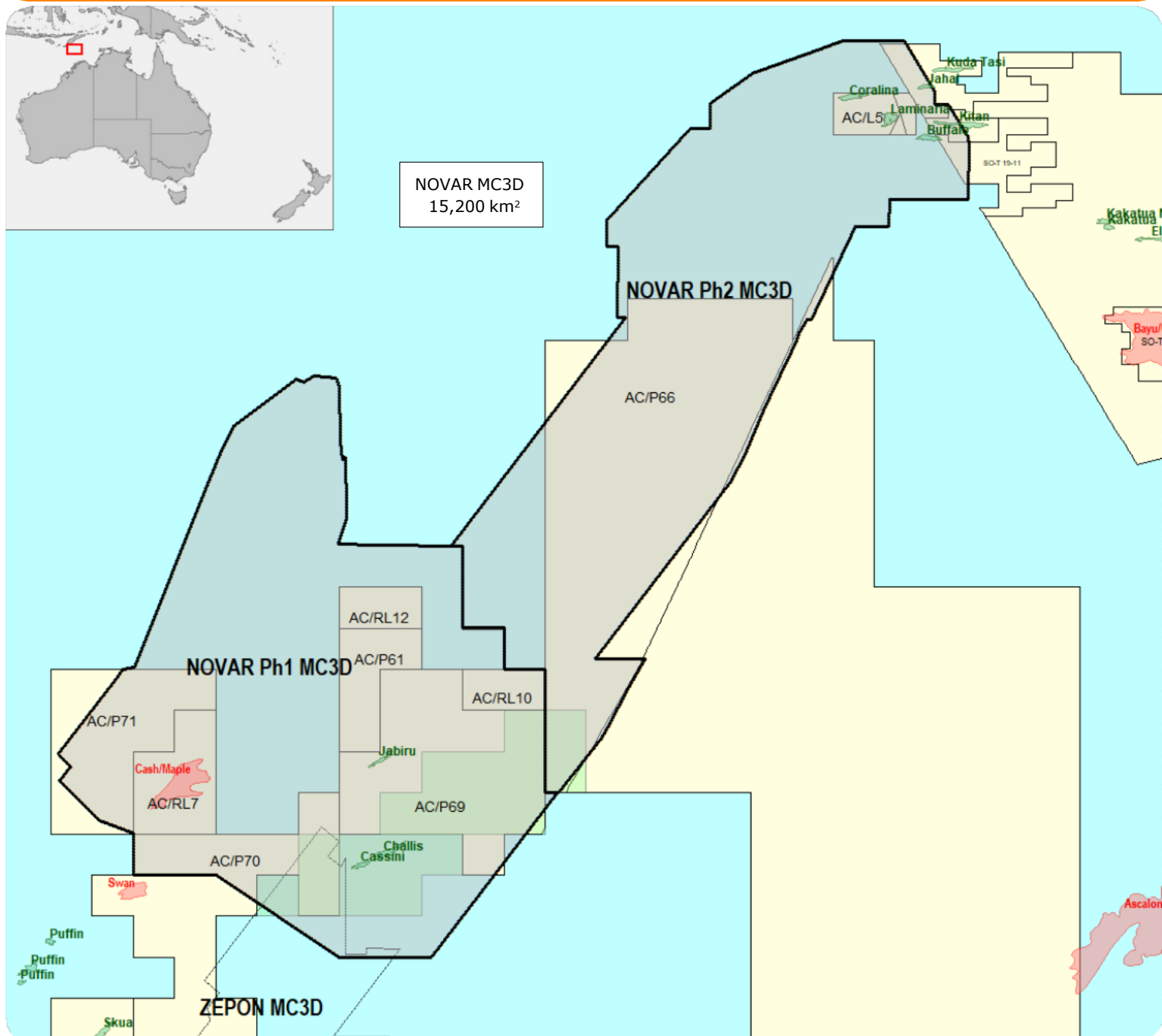


NOVAR MC3D MULTI-CLIENT SURVEY

North Vulcan Sub-basin advanced 3D PreSDM
seismic reprocessing with FWI imaging



NOVAR MC3D advanced 3D PreSDM seismic reprocessing with FWI imaging

Project overview

One seamless 3D seismic dataset

Incorporates 10 legacy 3D surveys using DUG's advanced broadband PreSDM workflow with FWI imaging

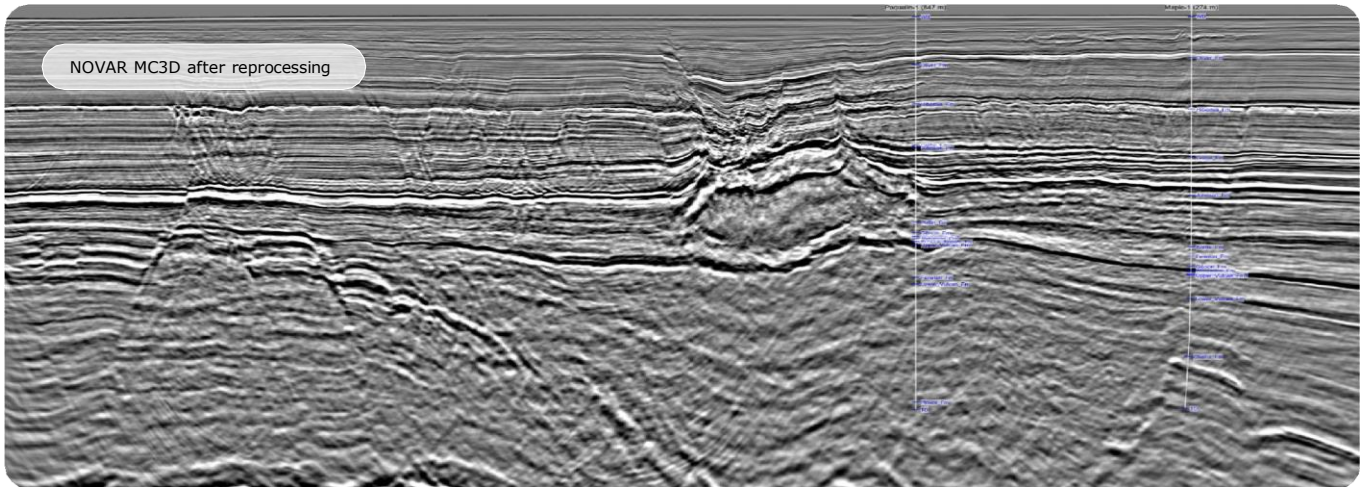
Located over an area that has:

- Cash/maple multi-TCF gas/condensate field development
- Many undeveloped discoveries
- Significant exploration upside potential

NOVAR MC3D designed for:

- Basin scale and prospect/field specific evaluations
- De-risking exploration and development
- Increasing Australia's oil and gas reserves
- Identifying proximal CCUS projects

NOVAR MC3D after reprocessing



Legacy 3D surveys before reprocessing

