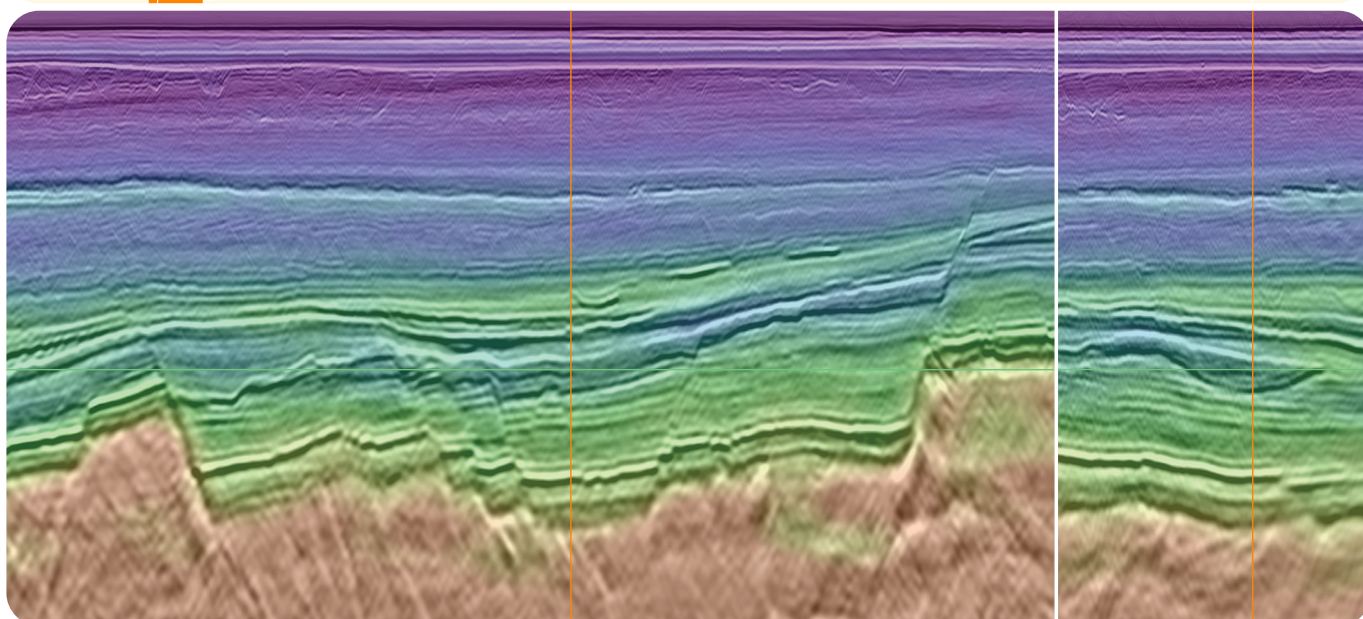
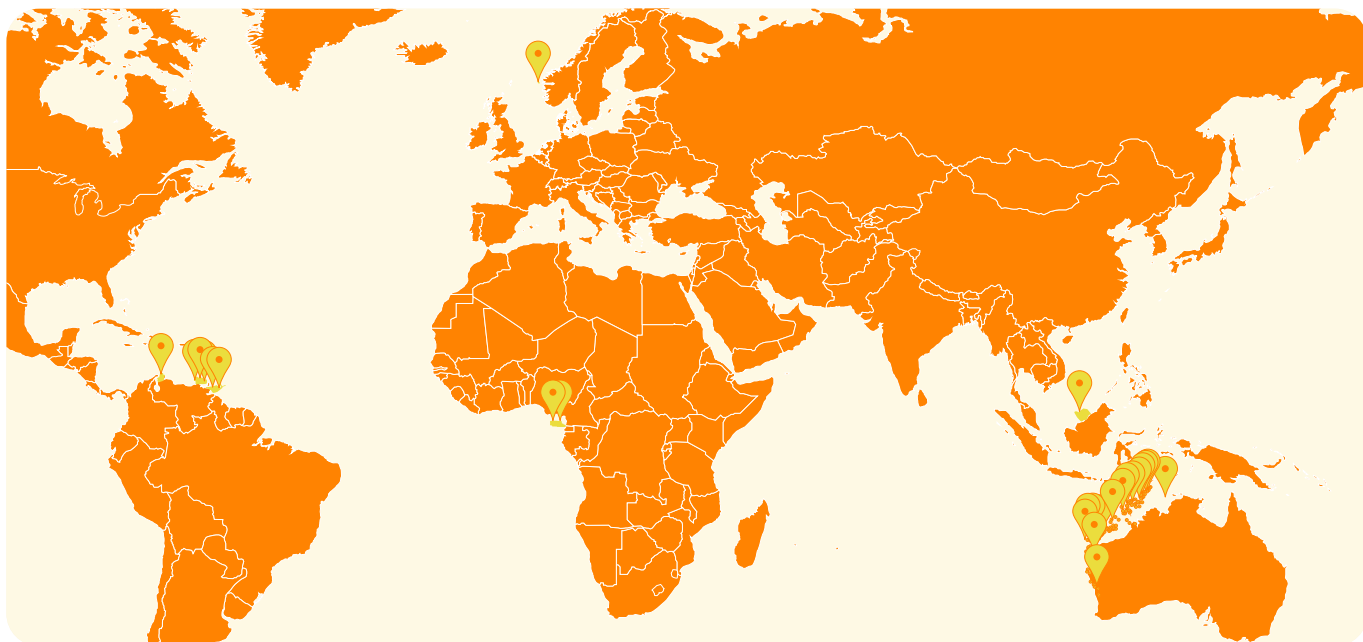




DUG MULTI-CLIENT

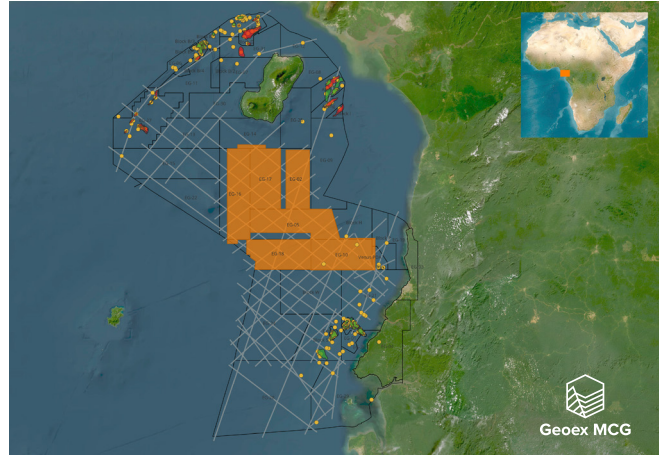
Enhanced seismic imaging for smarter exploration, appraisal and development decisions.



Africa & Europe

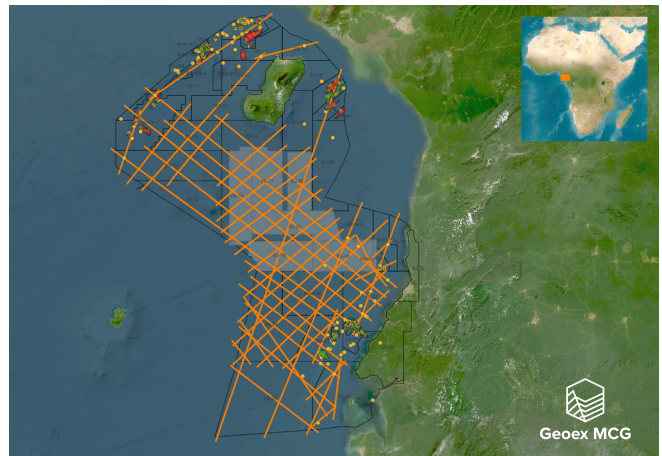
Equatorial Guinea MC3D

- 9,525 sq km – one seamless dataset
- Advanced broadband 3D Q-PreSDM reprocessing workflow including MP-FWI enhancements
- Incorporates six legacy surveys
- Project partners: Geox MCG, Perceptum, MHDM



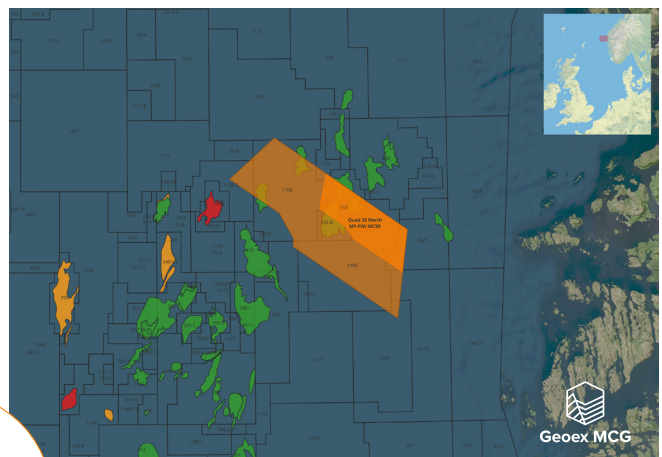
Equatorial Guinea MC2D

- 5,658 km – basin-wide regional dataset tied to well control
- Advanced broadband PreSDM reprocessing workflow including FWI
- Incorporates two modern legacy surveys (2005 & 2011)
- Reprocessed simultaneously with the Equatorial Guinea MC3D to ensure consistency
- Project partners: Geox MCG, Perceptum, MHDM



Norway Quad 35 Hybrid MC3D

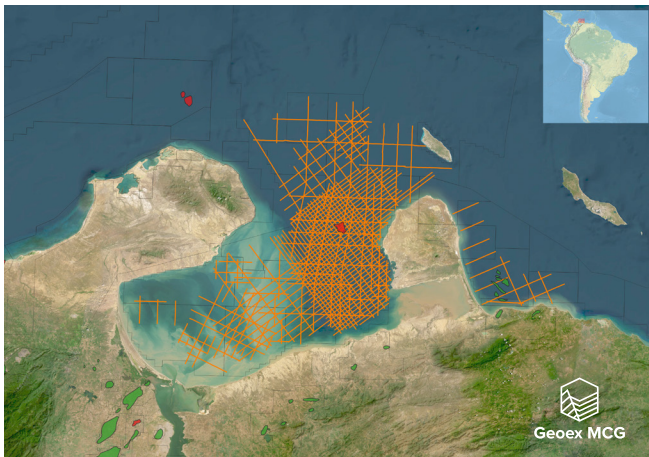
- 420 sq km – high-density streamer and OBN acquisition
- Includes DUG MP-FWI Imaging
- Resolves imaging challenges on the Gjoa field
- Reveals adjacent prospectivity
- Project partners: Geox MCG, Seismic Partner, BGP



All backed by
DUG's powerhouse
seismic processing,
imaging and HPC
technology.

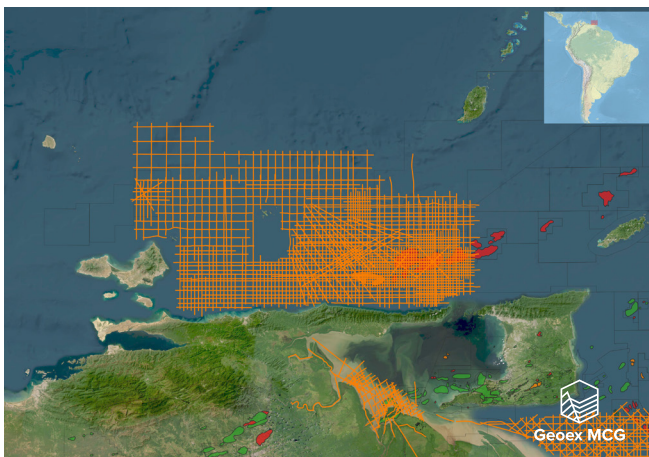
Americas

VENEZUELAN PROJECTS IN COLLABORATION WITH GEOEX MCG



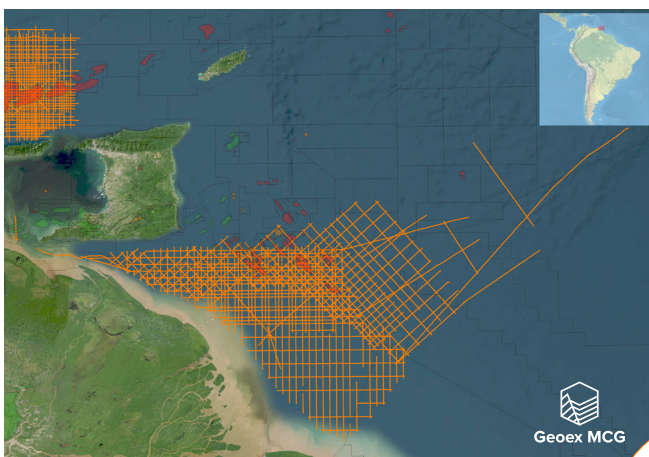
Golfo De Venezuela 89C & 68A MC2D

- 8,854 km – 2025-26 broadband 2D PreSDM reprocessing
- Better elucidates formations associated with the Perla discovery
- Similar carbonate structures provide evidence for future gas discoveries
- Project partner: Geox MCG



Norte De Paria 80B & Este De Margarita 72A & Golfo De Paria Aguas Llanas 80B MC2D

- 16,991 km – 2025-26 broadband 2D PreSDM reprocessing
- Close proximity to the Dragon, Hibiscus and Rio Caribe gas discoveries
- Superior imaging of the Mio-Pliocene intervals associated with these fields within a broader, regional perspective
- Project partner: Geox MCG



Delta Amacuro 80B & 69B MC2D

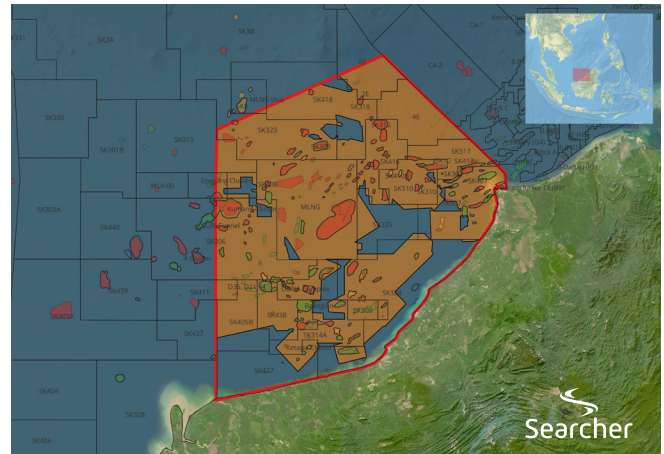
- 11,645 km – 2025-26 broadband 2D PreSDM reprocessing
- The Delta Amacuro region is significantly underexplored despite several nearby field discoveries
- This dataset will improve the understanding of deposition and subsequent hydrocarbon potential with numerous self-similar structures already identified
- Project partner: Geox MCG

All backed by DUG's powerhouse seismic processing, imaging and HPC technology.

Asia Pacific

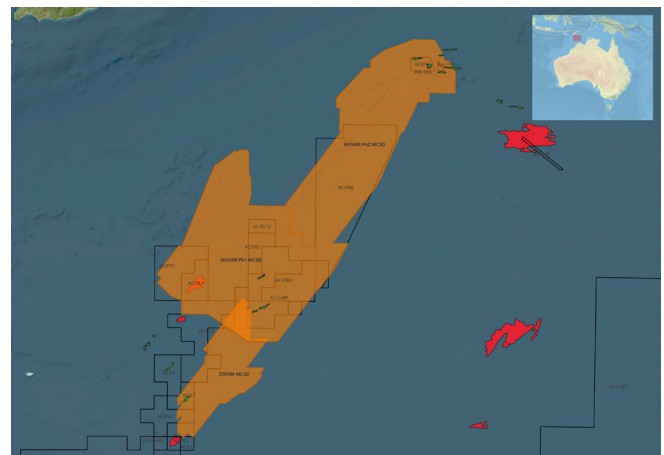
Malaysia East Sarawak MC3D

- 45,000 sq km – one seamless dataset
- Advanced broadband 3D Q-PreSDM reprocessing workflow including FWI enhancements
- Incorporates over 60 legacy surveys
- Data available early 2027
- Project partner: Searcher Seismic



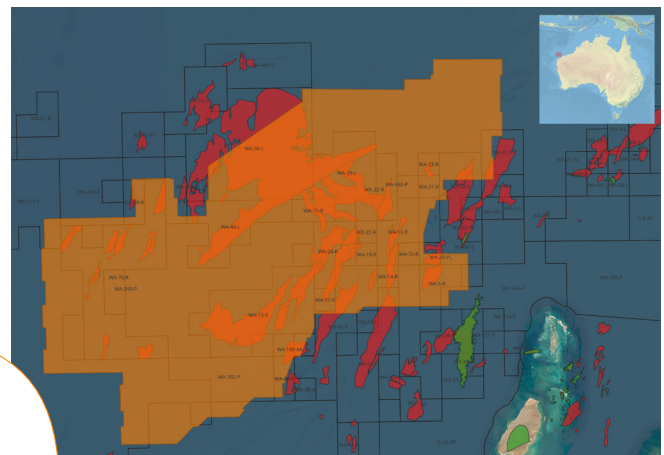
Australia, Vulcan Sub-Basin NOVAR MC3D

- 17,658 sq km – one seamless dataset
- Advanced broadband 3D PreSDM reprocessing enhancements
- Incorporates ten legacy surveys
- QI, rock physics and regional seismic interpretation studies available



Australia, Northern Carnarvon Basin BEX MC3D

- 16,468 sq km – one seamless dataset
- Advanced broadband 3D Q-PreSDM reprocessing workflow including FWI enhancements
- Incorporates six legacy surveys
- QI, rock physics and regional seismic interpretation studies available



All backed by
DUG's powerhouse
seismic processing,
imaging and HPC
technology.