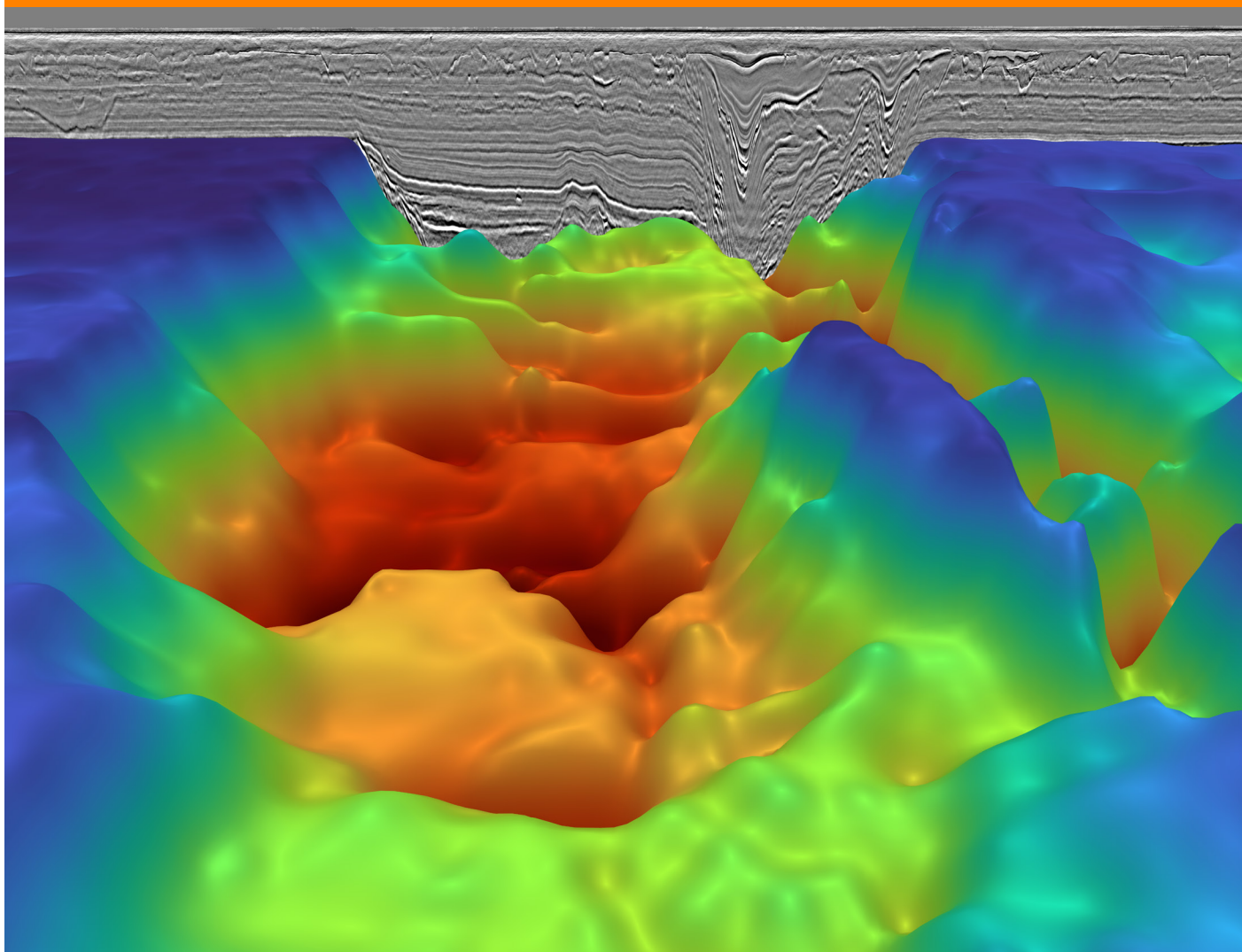


# DUG Insight

Site characterisation | Wind | Geothermal | CCUS

---

Processing | Imaging | Interpretation | Visualisation  
At **any** resolution



**DUG Insight** is a complete solution for advanced, ultra-high-resolution 2D/3D processing, imaging and characterisation. Modern, interactive functionality for single/multi-channel and sub-bottom profiler seismic data — including DUG's revolutionary Multi-parameter FWI Imaging technology.

Powered by a constant drive to research and develop cutting-edge technology DUG Insight brings together an arsenal of powerhouse functionality to deliver more certainty, faster.

Let's talk — contact [info@dug.com](mailto:info@dug.com)

---

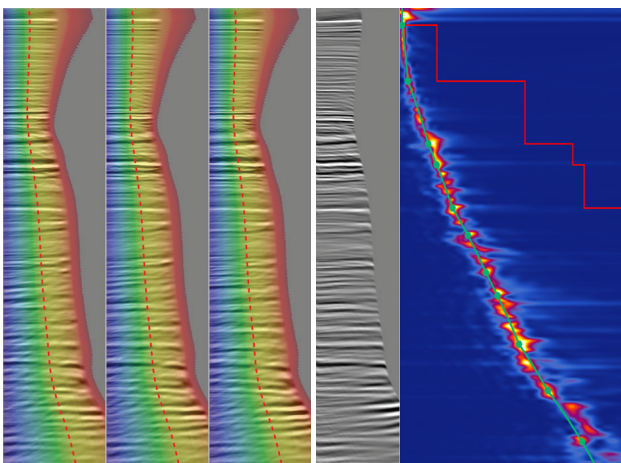
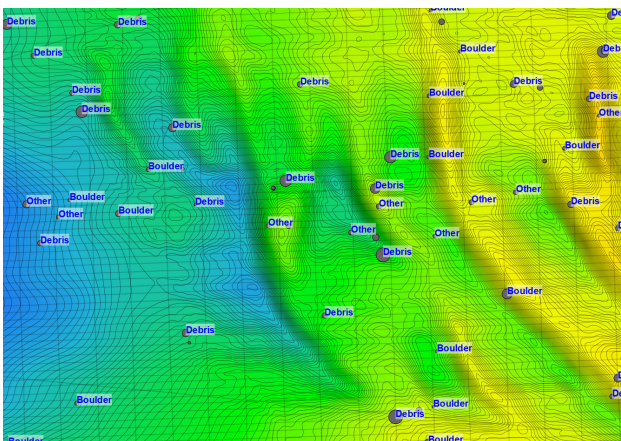
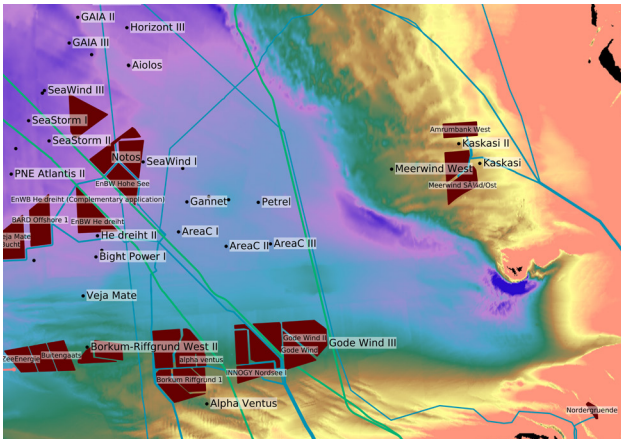
[dug.com/insight](https://dug.com/insight)



# DUG Insight

## Geoscience, not computer science

**Modern workflows need modern software.** Geoscientists must be able to adapt to increasing data volumes and evolving technology requirements. Leaders must onboard new team members smoothly, and have a comprehensive set of tools to tackle any processing, imaging or interpretation challenge. Projects require seamless collaboration between any number of users from anywhere in the world. For smaller desktop studies or larger ultra-high-resolution near-surface characterisation projects, for wind, geothermal, mining or seismic applications, either onshore or offshore, **DUG Insight has you covered.**



### POWERFUL FUNCTIONALITY

- Interpretation at any resolution:
  - Seismic
  - Shallow hazards
  - Boulder picking
  - Near-surface anomalies
- Integrated 3D visualisation & mapping:
  - Structure
  - SBP
  - Attributes
  - Wells / boreholes
  - Seismic
  - GIS (shape files), infrastructure
- Inversion, processing & analysis
- Flexible data management & integration
- IHS Kingdom\* & Petrel+ data links

\*Mark of IHS, +Mark of Schlumberger

### SUPPORTED FLEXIBILITY

- Acclaimed technical team providing tailored, round-the-clock, same-day support
- Flexible licensing & leasing inclusive of maintenance, support & upgrades
- Use on DUG HPC Cloud or deploy on-premise
- Multi-user collaboration & cross-platform compatibility

### INTERACTIVE PRODUCTIVITY

- An interactive project experience with real-time feedback
- Parametrise workflows from hundreds of interactive processes & view outputs on the fly
- Prototype & derive optimal parameters faster — deliver superior results sooner
- Consistent, easy-to-use interface



**FREE TRIAL**  
Always free for students

Let's talk — contact [info@dug.com](mailto:info@dug.com)

[dug.com/insight](https://dug.com/insight)

